

GROUND LUG:

WIRE RANGE - TWO 600MCM-2
TIGHTENING TORQUE 500 IN-LB.

L1 L2 L3 T1 T2 T3

CUSTOMER CONNECTIONS:

WIRE RANGE - TWO 600MCM-2
TIGHTENING TORQUE 500 IN-LB.

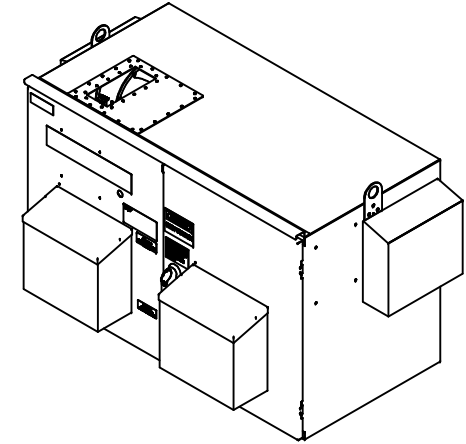
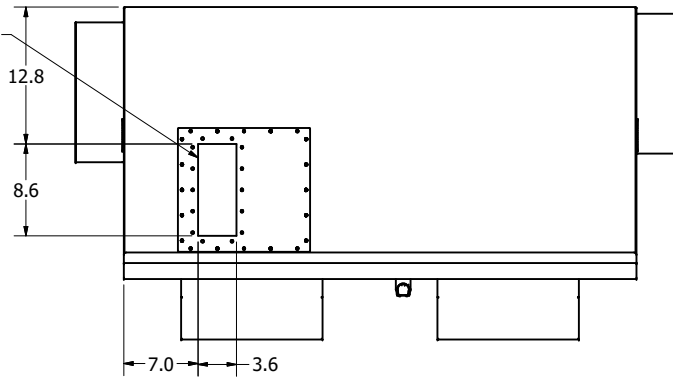
Notes:

1. Customer is responsible for installation to meet all national and local electrical codes.
2. Use only hubs or fittings that comply with UL514B for type 3R enclosures.
3. Approx. WT LBS : 950
4. Enclosure Color: RAL 7006 Beige Grey
5. JCI P/N: 371-09214-006

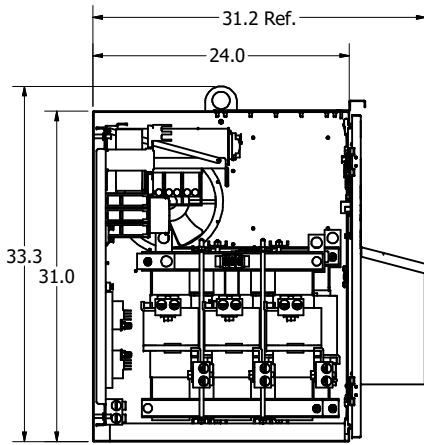
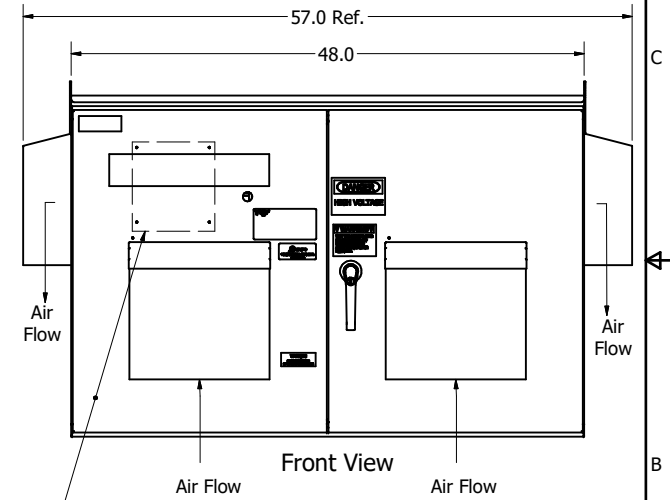
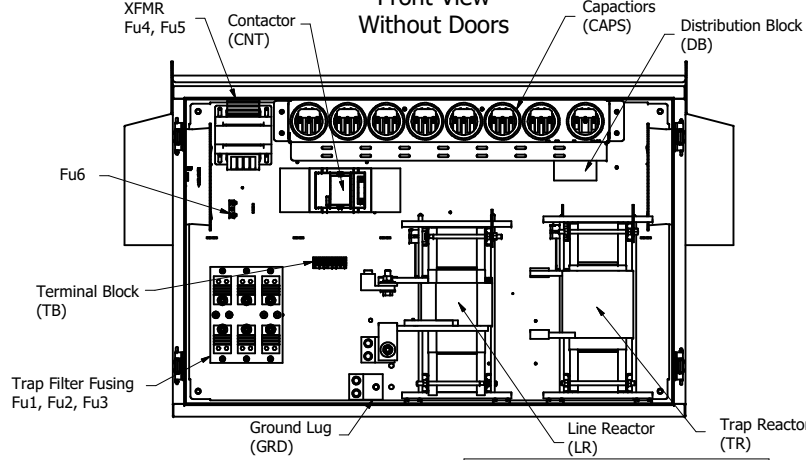
UNIT SPECIFICATIONS						
KVAR	HARMONIC	VOLT	Hz	PHASE	HP	AMPS
150	5TH	480	60	3	500	590

SCHEMATIC : 29597-PQ6

Top View



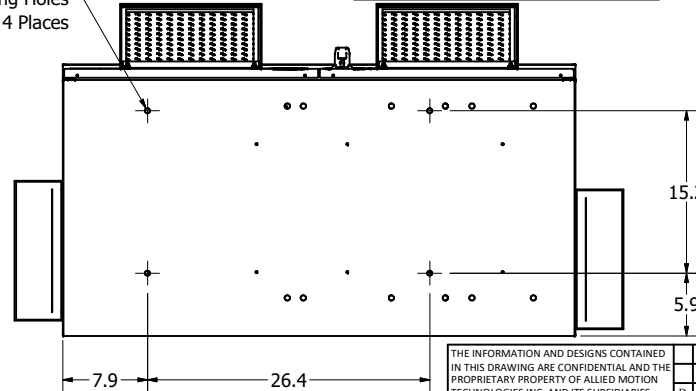
Front View Without Doors



Side View Without Wall

Thermal Switches Installed In Line Reactor And Tuning Reactor Wired To PQconnect For Monitoring

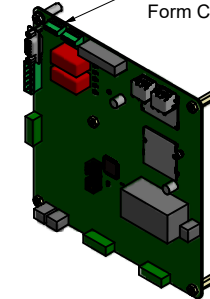
Ø0.47 Mounting Holes
4 Places



Bottom View

PQconnect Contactor Control Board Mounted To Inside Of Door

Customer Connection Form C Fault Relay J10



THE INFORMATION AND DESIGNS CONTAINED IN THIS DRAWING ARE CONFIDENTIAL AND THE PROPRIETARY PROPERTY OF ALLIED MOTION TECHNOLOGIES INC. AND ITS SUBSIDIARIES. NEITHER THIS DESIGN NOR ANY INFORMATION CONTAINED IN THIS DRAWING MAY BE REPRODUCED OR DISCLOSED TO OTHERS WITHOUT THE EXPRESS WRITTEN CONSENT OF ALLIED MOTION TECHNOLOGIES INC. AND ITS SUBSIDIARIES.

NO	REVISION	DATE	BY	TOLERANCES (EXCEPT AS NOTED)
D	5964 Updated DBCNT	06/10/22	JRN	.XX ± .03 .XXX ± .010
C	5688 Updated Cap Bracket	07/23/21	JRN	FRACTIONAL
B	Updated Hood Depth/Entry	04/16/21	JRN	ANGULAR
A	As Designed	06/07/19	JRN	± 1°

TOLERANCES (EXCEPT AS NOTED)		SCALE: 1/9		DATE: 06/07/19		REVISED	
DECIMAL		1/9		06/07/19		1	
.XX ± .03 .XXX ± .010		1/9		06/07/19		1	
FRACTIONAL		1/9		06/07/19		1	
ANGULAR		1/9		06/07/19		1	
± 1°		1/9		06/07/19		1	

TCI W132N10611 (Rev 13) 500HP
Germanstown, WI 53022
© 2021 TCI, LLC

An Allied Motion Company

HarmonicGuard Passive
500HP, 480/3/60, Type 3R, JCI

DWG BY: JRN DATE: 06/07/19 108112DG
SCALE: 1/9 REVISED: 1/9

SHT 1 OF 1